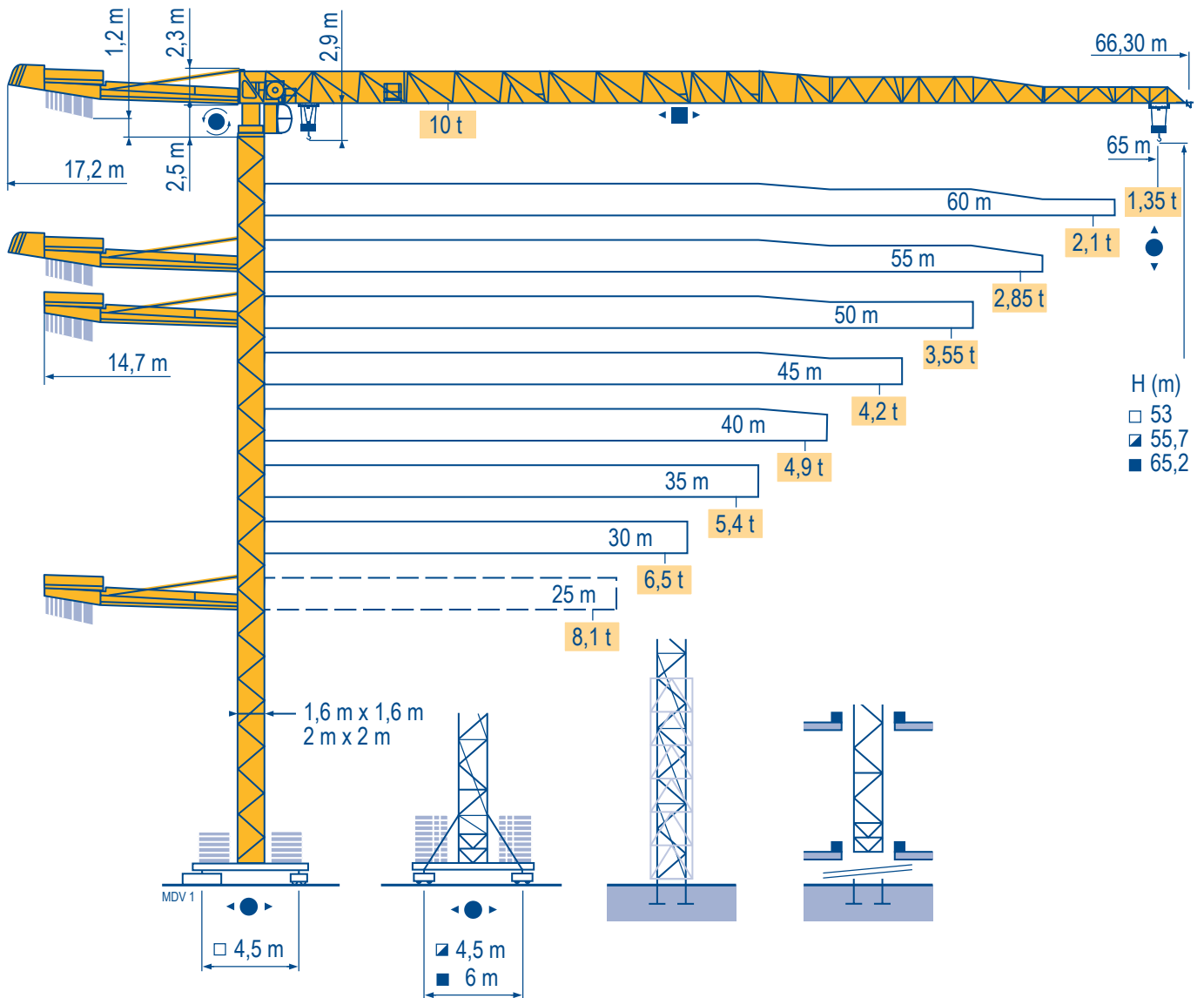


## MDT 218 J10



### City Topless

CE FEM 1.001-A3

Mat / Reações  $\square$  1,6 m

Maste / Eckdrücke

Masts / Reactions

Mástil / Reacciones

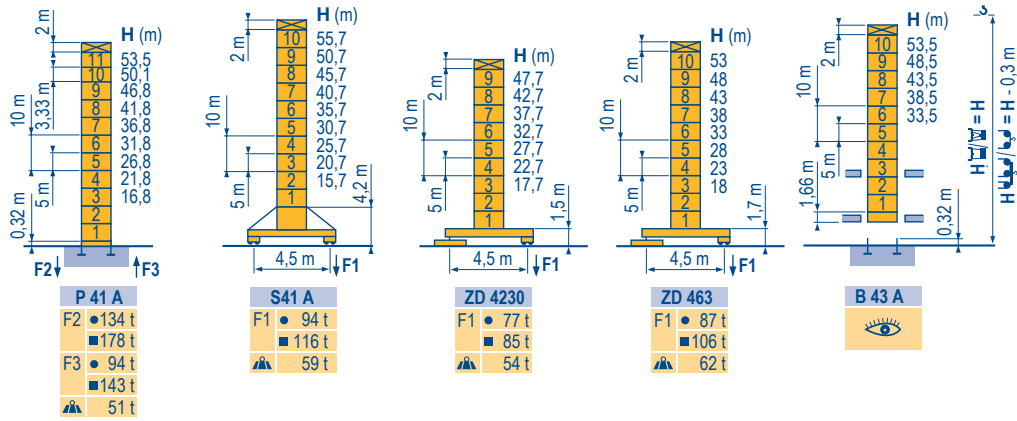
Torre / Reazioni

Tramo / Reações

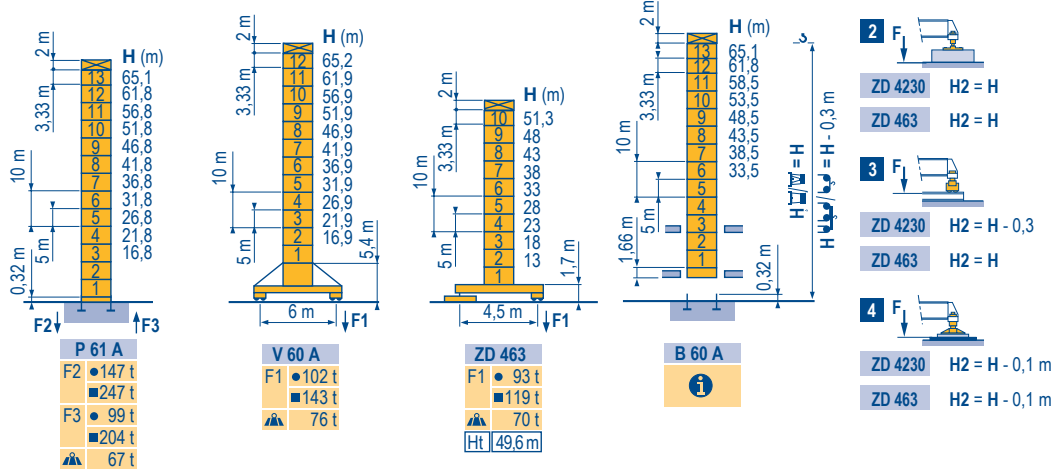
Tramo / Reações

Tramo / Reações

MDV 1



$\square$  2 m



Télescopage sur dalles  
Kletterkrane im Gebäude

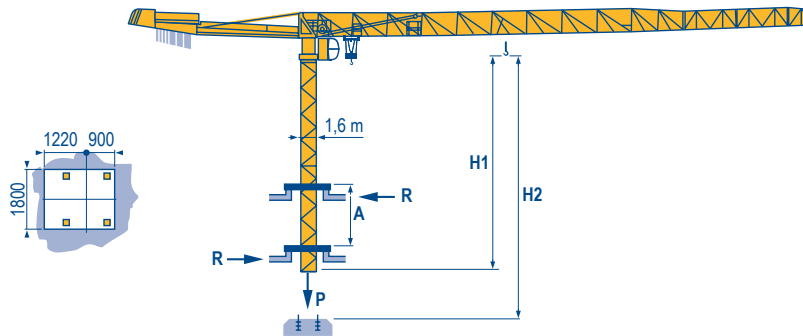
Climbing crane

Telescopage gruas trepadoras

Gru in cavedio

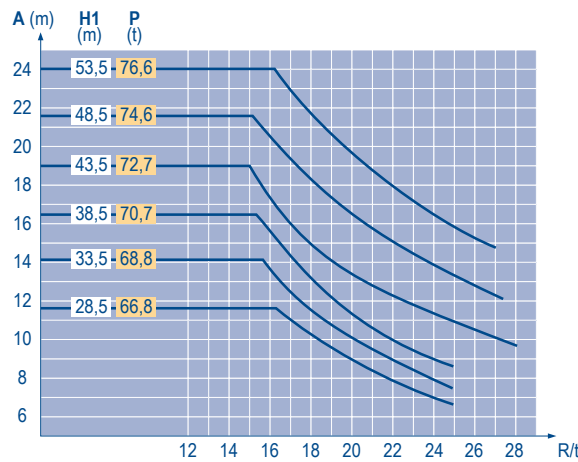
Telescopagem sobre lagas

MDV 1



B 43 A

B 60 A  $\text{\textcircled{i}}$



City Topless  
MDT 218 J10

POTAIN  $\text{\textcircled{P}}$

F	D	GB	E	I	P
●	●	●	●	●	●
■	■	■	■	■	■
⚙️	⚙️	⚙️	⚙️	⚙️	⚙️
ℹ️	ℹ️	ℹ️	ℹ️	ℹ️	ℹ️
Ht	Ht	Ht	Ht	Ht	Ht
Réactions en service Réactions hors service A vide sans lest (ni train de transport) avec flèche et hauteur maximum.	Reaktionskräfte in Betrieb Reaktionskräfte außer Betrieb Ohne Last, Ballast (und Transportachse), mit Maximalausleger und Maximalhöhe.	Reactions in service Reactions out of service Without load, ballast (or transport axes), with maximum jib and maximum height.	Reacciones en servicio Reacciones fuera de servicio Sin carga, sin lastre, (ni tren de transporte), flecha y altura máxima.	Reazioni in servizio Reazioni fuori servizio A vuoto, senza zavorra (ne assali di trasporto) con braccio massimo e altezza massima.	Reações em serviço Reações fora de serviço Sem carga (nem trem de transporte)- sem lastro com lança e altura máximas.
Nous consulter Hauteur maxi roulante	Auf Anfrage Fahrbare max. Höhe	Consult us Travelling maximum height	Consultarnos Altura máxima móvil	Consultateci Altezza massima gru traslante	Consultar-nos Altura máxima sobre translação

## Courbes de charges

### Lastkurven

### Load diagrams

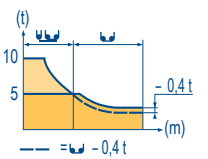
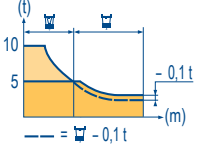
### Curvas de cargas

### Curve di carico

### Curva de cargas

MDV 1

65 m	3,1	▶	12,1	15	17	20	21,5	23,1	25	27	30	32	35	37	40	42	45	47	50	52	55	57	60	62	65	m
	10	7,7	6,7	5,5	5	5	4,6	4,2	3,7	3,4	3	2,85	2,6	2,45	2,25	2,1	1,95	1,85	1,7	1,65	1,5	1,45	1,35	t		
60 m	3,1	▶		15,2	17	20	22	25	27,3	29,3	32	35	37	40	42	45	47	50	52	55	57	60				m
	10	8,8	7,3	6,5	5,6	5	5	4,5	4,1	3,8	3,5	3,3	3	2,85	2,65	2,5	2,35	2,25	2,1						t	
55 m	3,1	▶		17,6	20	22	25	27	30	31,8	33,9	35	37	40	42	45	47	50	52	55						m
	10	8,6	7,7	6,7	6,1	5,4	5	5	4,8	4,5	4,1	3,9	3,6	3,4	3,2	3	2,85								t	
50 m	3,1	▶		19,2	20	22	25	27	30	32	34,7	37,1	40	42	45	47	50									m
	10	9,5	8,6	7,4	6,7	6	5,5	5	5	4,6	4,3	4	3,8	3,55											t	
45 m	3,1	▶		19,9	22	25	27	30	32	35	36,1	38,6	40	42	45											m
	10	8,9	7,7	7,1	6,2	5,8	5,2	5	5	4,8	4,5	4,2	4,5	4,2											t	
40 m	3,1	▶		20,3	22	25	27	30	32	35	36,8	39,3	40													m
	10	9,1	7,9	7,2	6,4	5,9	5,3	5	5	4,9															t	
35 m	3,1	▶		20,6	22	25	27	30	32	35																m
	10	9,3	8	7,3	6,5	6	5,4																		t	
30 m	3,1	▶		20,6	22	25	27	30																		m
	10	9,3	8	7,3	6,5	t																			t	
25 m	3,1	▶		20,8	22	25																				m
	10	9,4	8,1	t																					t	

## Lest de contre-fleche

### Gegenauslegerballast


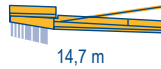
### Counter-jib ballast

### Lastre de contra flecha

### Contrappeso

### Lastros da contra lança

MDV 1

	1 100 kg - 3 600 kg	(kg)
65 m	 17,2 m	18 800
60 m		18 800
55 m		18 800
50 m		18 800
45 m		17 700
40 m	 14,7 m	16 600
35 m		15 500
30 m		14 400
25 m		13 000

## Lest de base

### Grundballast

### Base ballast

### Lastre de base

### Zavorra di base

### Lastros da base


MDV 1

∅ 1,6 m	S 41 A	●	H (m)	55,7	50,7	45,7	40,7	35,7	30,7	25,7	20,7	15,7		
			▲ (t)	114	84	78	78	78	78	78	78	78	78	
∅ 1,6 m	ZD 4230	●	H (m)	47,7	42,7	37,7	32,7	27,7	22,7	17,7				
			▲ (t)	80	80	80	80	80	80	80				
∅ 1,6 m	ZD 463	●	H (m)	53	48	43	38	33	28	23	18			
			▲ (t)	95	75	75	75	75	75	75	75			
∅ 2 m	V 60 A	●	H (m)	65,2	61,9	56,9	51,9	46,9	41,9	36,9	31,9	26,9	21,9	16,9
			▲ (t)	132	120	84	60	48	36	36	36	36	36	36
∅ 2 m	ZD 463	●	H (m)	51,3	49,6	48	43	38	33	28	23	18	13	
			▲ (t)	105*	95	80	70	70	70	70	70	70	70	70

## City Topless











### MDT 218 J10

POTAIN®

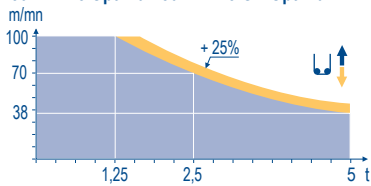
	F	D	GB	E	I	P
<b>A</b>	Distance entre cadres	Abstand zwischen den Rahmen	Distance between collars	Distancia entra marcos	Distanza fra i telai	Distância entre quadros
<b>H1</b>	Hauteur grue	Kranhöhe	Crane height	Altura grúa	Altezza gru	Altura da grua
<b>P</b>	Poids de la grue(en service)	Krangewicht (in Betrieb)	Crane weight (in service)	Peso de la grúa (en servicio)	Peso della gru (in servizio)	Peso da grua (em serviço)
<b>R</b>	Réaction horizontale	Horizontalkräfte	Horizontal reaction	Reaccion horizontal	Reazione orizzontale	Reacção horizontal
	Voir télescopage sur dalles	Siehe Kletterkrane im Gebäude	See climbing crane	Veja grua trepadora	Consultare gru in cavedio	Ver telescopagem sobre lages
<b>*</b>	Utilisation poste fixe uniquement	Nur stationärer Einsatz	Only static use	Utilización chasis fijo solamente	Solo in postazione fissa	Utilização sobre chassis fixo apoiado

Mécanismes  
Antriebe  
Mechanisms  
Mecanismos  
Meccanismi  
Mecanismos


MDV 1

		U						U						ch - PS hp	kW		
	50 LVF 25 Optima	m/min	3	12	38	50	70	100	1,5	6	19	25	35	50	50	37	278 m
	t	5	5	5	3,75	2,5	1,25	10	10	10	7,5	5	2,5				
	50 LVF 25 GH Optima	m/min	3	12	38	50	70	100	1,5	6	19	25	35	50	50	37	515 m
	t	5	5	5	3,75	2,5	1,25	10	10	10	7,5	5	2,5				
	7 DVF 4	m/min	0 → 79											6,5	4,8		
	RVF 152 Optima +	tr/min U/min - rpm	0 → 0,8											2 x 5,5	2 x 4		
	ZD 4230 RT 324	m/min	12,5 - 25											2 x 7	2 x 5,2		
	ZD 463 RT 443 A1 2V	m/min	15 - 30											4 x 5	4 x 3,7		
	S 41 A RT 443 A1 2V R ≥ 10 m	m/min	15 - 30											4 x 5	4 x 3,7		
	V 60 A RT 544 A1 2V R ≥ 13 m	m/min	13,5 - 27											4 x 7	4 x 5,2		
CEI 38 		IEC 38		kVA													
400 V (+6% -10%)		50 LVF : 65 kVA															

50 LVF 25 Optima - 50 LVF 25 GH Optima



	F	D	GB	E	I	P
	Levage	Heben	Hoisting	Elevación	Sollevamento	Elevação
	Distribution	Katzfahren	Trolleying	Distribución	Distribuzione	Distribuição
	Orientation	Schwenken	Slewing	Orientación	Rotazione	Rotação
	Translation	Kranfahren	Travelling	Traslación	Traslazione	Translação

 Document commercial non contractuel. Pour toute information technique se référer à la notice correspondante. Unverbindliches Vertriebsdokument. Für technische Informationen, siehe die entsprechenden Anweisungen. This commercial document is not legally binding. For any technical information, please refer to the corresponding instructions. Documento comercial non contractuel. Para cualquier información técnica, ver la noticia correspondiente. Documento commerciale non vincolante, per tutte le informazioni tecniche fare riferimento al catalogo istruzioni. Documento comercial não contratual. Para qualquer informação técnica complementar consultar as respectivas instruções.



**Americas**  
Tel : +1 888 479 7278  
Tel : +1 717 593 2000

**Europe - Middle East - Africa**  
Tel : +33 (0) 4 72 81 50 00  
Tel : +44 (0) 191 522 2000

**Asia - Pacific**  
Tel : +65 6264 1188  
Fax : +65 6862 4040

www.manitowoccrane.com

18, rue de Charbonnières - B.R.173  
69132 ECULLY Cedex - France

Tél. : +33 (0) 4 72 18 20 20  
Fax. : +33 (0) 4 72 18 20 00  
www.manitowoccrane.com

**City Topless MDT 218 J10**  
Code N-89985-55\_Ref. 2006 38 MDV 1

Copyright.Reproduction interdite © POTAIN 2006

Réalisation Secdoc