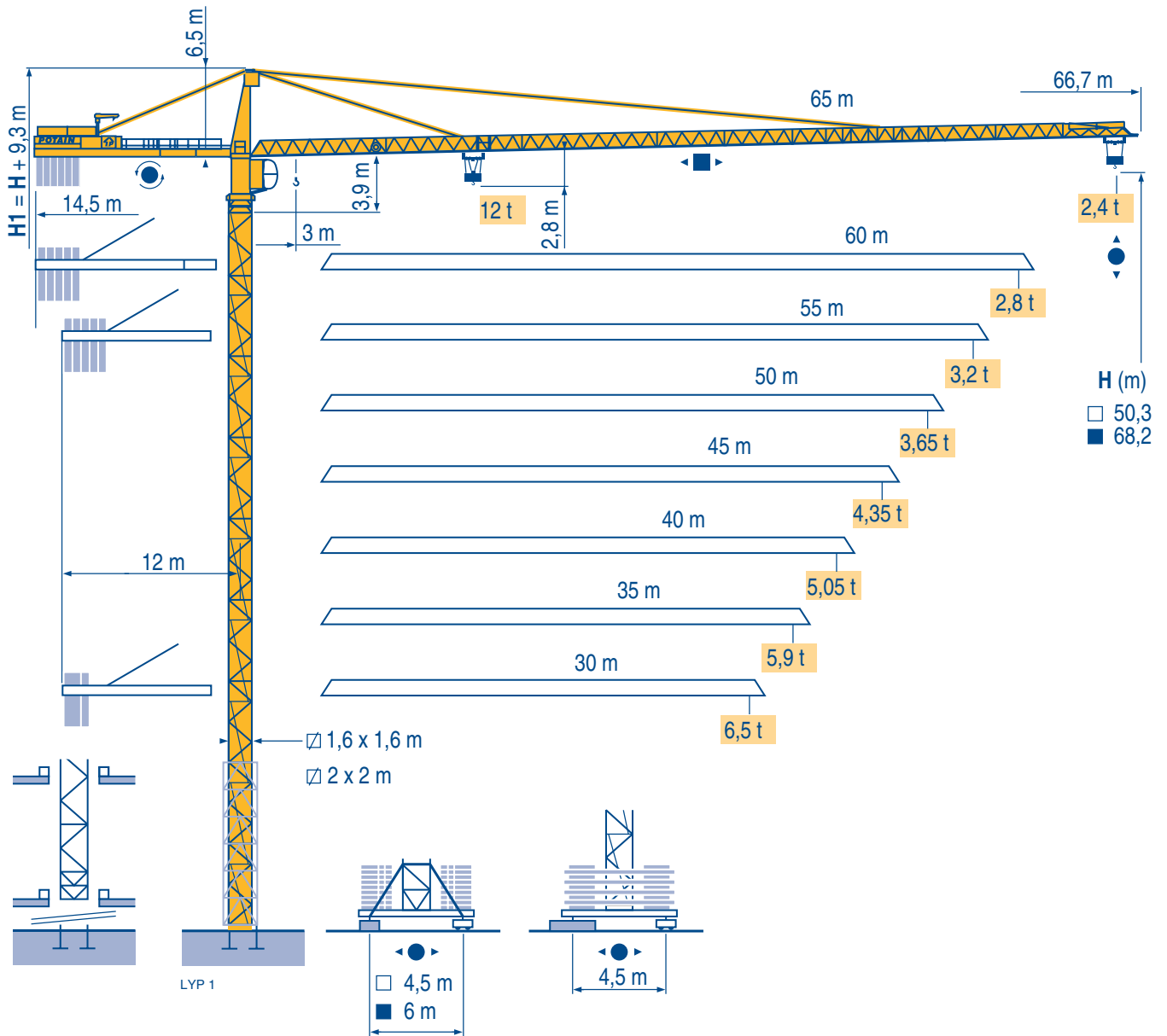


MD 238 J12



TOPKIT

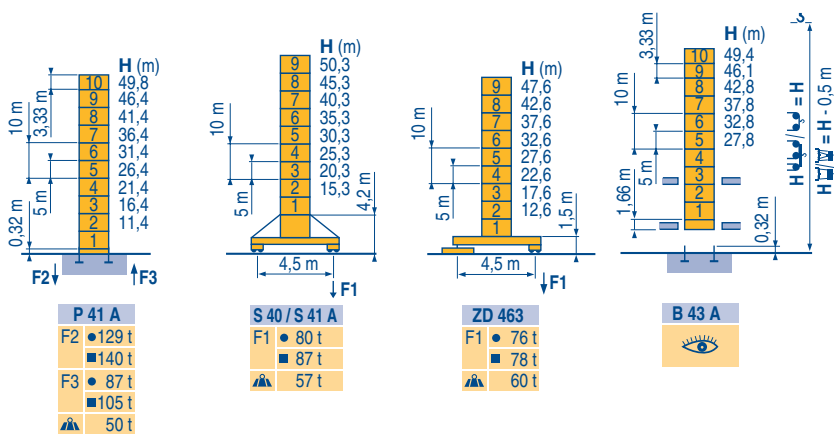
CE FEM 1.001-A3

Mat / Réactions \square 1,6 m

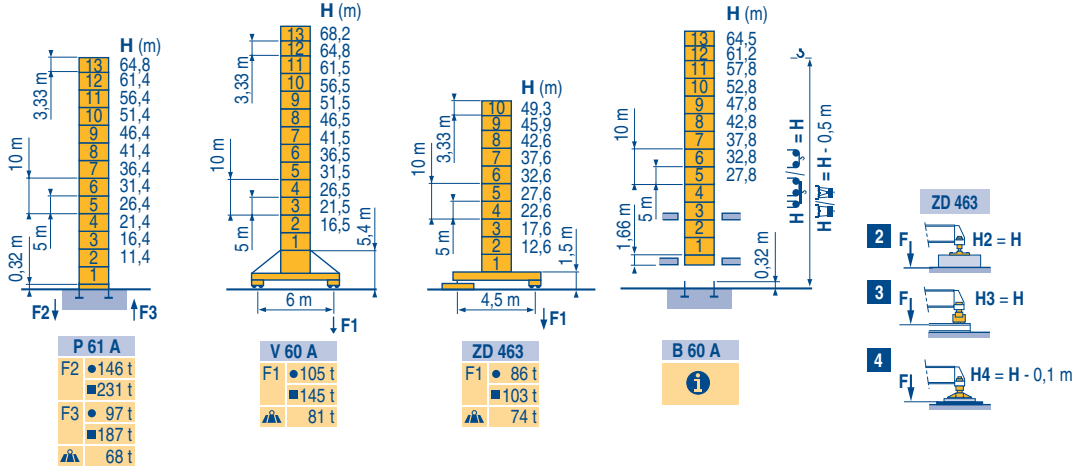
Maste /
Eckdrücke \square 30 m \Rightarrow 60 m

Masts /
Reactions
Mástil /
Reacciones
Torre / Reazioni
Tramo /
Reações

LYP 1

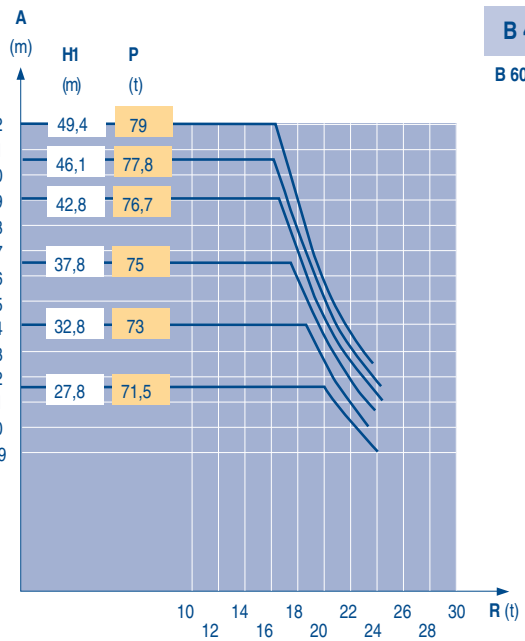
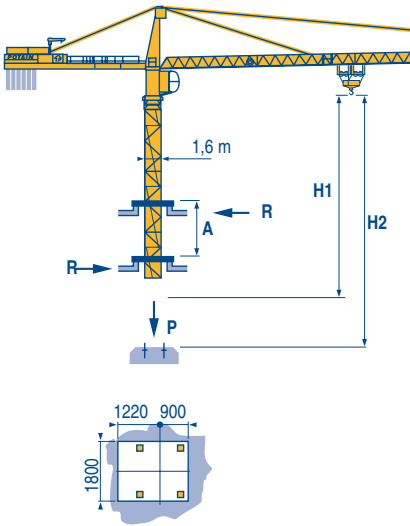


\square 2 m
30 m \Rightarrow 65 m



Télescopage sur dalles
Kletterkrane im Gebäude
Climbing crane
Telescopage gruas trepadoras
Gru in cavedio
Telescopagem sobre lajes

LYP 1



B 43 A

B 60 A

TOPKIT
MD 238 J12

POTAIN

F	D	GB	E	I	P
Réactions en service	Reaktionskräfte in Betrieb	Reactions in service	Reacciones en servicio	Reazioni in servizio	Reações em serviço
Réactions hors service	Reaktionskräfte außer Betrieb	Reactions out of service	Reacciones fuera de servicio	Reazioni fuori servizio	Reações fora de serviço
	Ohne Last, Ballast (und Transportachse), mit Maximalausleger und Maximalhöhe.	Without load, ballast (or transport axles), with maximum jib and maximum height.	Sin carga, sin lastre, (ni tren de transporte), flecha y altura máxima.	A vuoto, senza zavorra (ne assali di trasporto) con braccio massimo e altezza massima.	Sem carga (nem trem de transporte) - sem lastro com lança e altura máximas.
	Nous consulter	Auf Anfrage	Consultarnos	Consultateci	Consultar-nos

Courbes de charges

Lastkurven

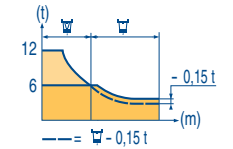
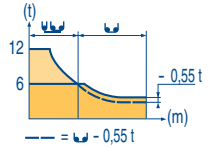
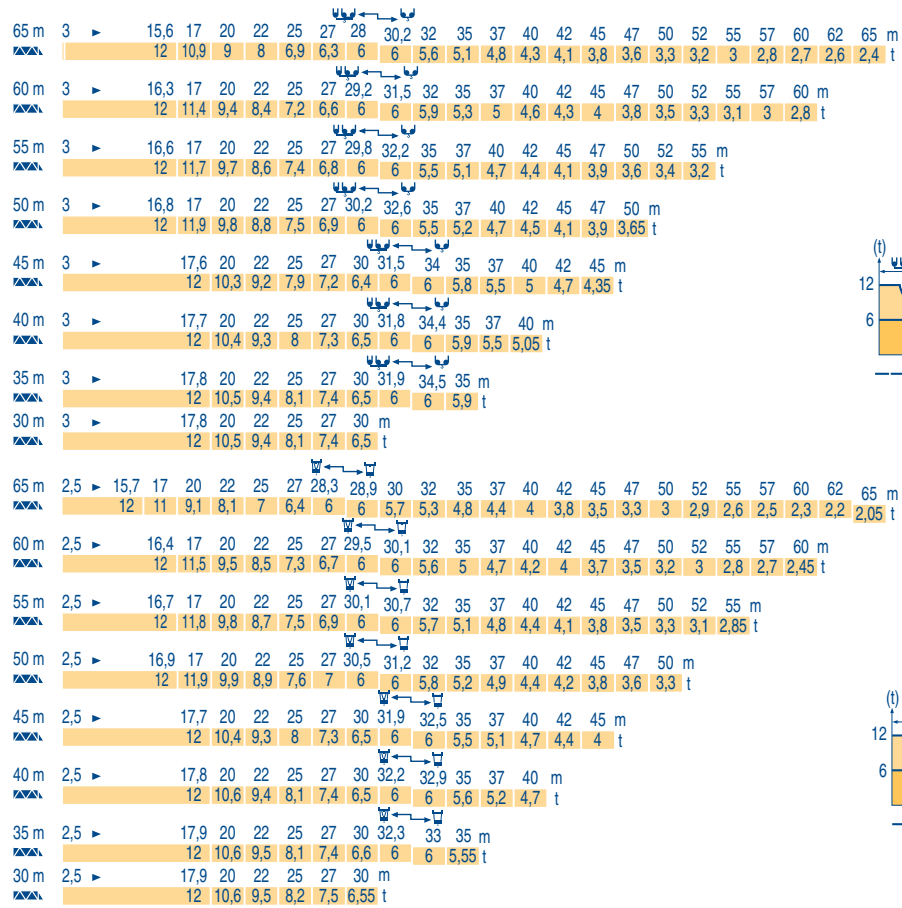
Load diagrams

Curvas de cargas

Curve di carico

Curva de cargas

LVP 1



Lest de contre-flèche

Gegenauslegerballast

Counter-jib ballast

Lastre de contra flecha

Contrappeso

Lastros da contra lança

LVP 1

Crane Model	4 600 - 4 200 - 3 400 - 2 300 kg		4 200 - 700 kg	
	Length (m)	Weight (kg)	Length (m)	Weight (kg)
65 m	14,5 m	21 000	14,5 m	21 000
60 m	14,5 m	20 200	14,5 m	19 600
55 m	12 m	25 200	12 m	24 500
50 m	12 m	23 300	12 m	23 100
45 m	12 m	21 000	12 m	20 300
40 m	12 m	18 300	12 m	17 500
35 m	12 m	16 000	12 m	15 400
30 m	12 m	14 100	12 m	13 300

Lest de base

Grundballast

Base ballast

Lastre de base

Zavorra di base

Lastros da base

LVP 1

Crane Model	S 40 A S 41 A	H (m)	Weight (t)											
			50,3	45,3	40,3	35,3	30,3	25,3	20,3	15,3				
1,6 m	S 40 A S 41 A	H (m)	50,3	45,3	40,3	35,3	30,3	25,3	20,3	15,3				
			(t)	72	72	72	72	72	72	72	72			
1,6 m	ZD 463	H (m)	47,6	42,6	37,6	32,6	27,6	22,6	17,6	12,6				
			(t)	60	60	60	60	60	60	60	60			
2 m	V 60 A	H (m)	68,2	64,8	61,5	56,5	51,5	46,5	41,5	36,5	31,5	26,5	21,5	16,5
			(t)	132	120	108	72	60	36	36	36	36	36	36
2 m	ZD 463	H (m)	49,3	45,9	42,6	37,6	32,6	27,6	22,6	17,6	12,6			
			(t)	75	60	60	60	60	60	60	60	60		

Ancrages

Verankerungen

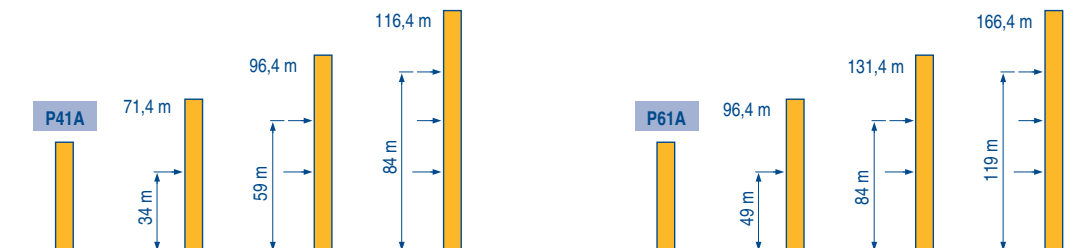
Anchorage

Anclaje

Ancoraggio

Ancoragem

LVP 1










TOPKIT MD 238 J12

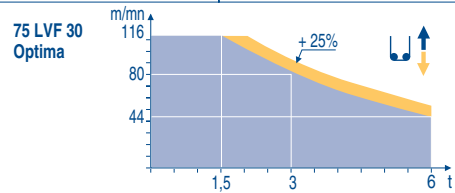
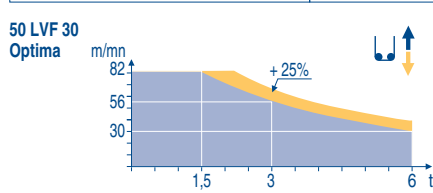








	F	D	GB	E	I	P
A	Distance entre cadres	Abstand zwischen den Rahmen	Distance between collars	Distancia entra marcos	Distanza fra i telai	Distância entre quadros
H1	Hauteur grue	Kranhöhe	Crane height	Altura grúa	Altezza gru	Altura da grua
P	Poids de la grue(en service)	Krangelicht (in Betrieb)	Crane weight (in service)	Peso de la grúa (en servicio)	Peso della gru (in servizio)	Peso da grua (em serviço)
R	Réaction horizontale	Horizontalkräfte	Horizontal reaction	Reaccion horizontal	Reazione orizzontale	Reacção horizontal
	Voir télescopage sur dalles	Siehe Kletterkrane im Gebäude	See climbing crane	Veja grua trepadora	Consultare gru in cavedio	Ver telescopagem sobre lages


Mécanismes
Antriebe
Mechanisms
Meccanismi
Mecanismos

LYP 2

				↕ ↑					↕ ↕ ↑					ch - PS hp	kW					
↕	50 LVF 30 Optima	m/min	2,6 → 10 → 30 → 40 → 56 → 82	1,3 → 5 → 15 → 20 → 28 → 41	50	37	337 m	t	6	6	6	4,5	3	1,5	12	12	12	9	6	3
	75 LVF 30 Optima	m/min	3,6 → 14 → 44 → 56 → 80 → 116	1,8 → 7,2 → 22 → 28 → 40 → 58	75	55	766 m		t	6	6	6	4,5	3	1,5	12	12	12	9	6
↔	7 DVF 4	m/min	0 → 79					6,5	4,8											
↻	RVF 152 Optima	tr/min U/min rpm	0 → 0,8					2 x 5,5	2 x 4											
	RT 324 R ≥ 10 m	m/min	12,5 - 25					2 x 7	2 x 5,2											
	RT 443 A1 2V R ≥ 10 m	m/min	15 - 30					4 x 5	4 x 3,7											
	RT 443 A1 2V	m/min	15 - 30					4 x 5	4 x 3,7											
	RT 544 A1 2V R ≥ 13 m	m/min	13,5 - 27					4 x 7	4 x 5,2											
CEI 38 		IEC 38		kVA																
400 V (+6% -10%) 50 Hz				50 LVF : 70 kVA 75 LVF : 95 kVA					2000/14											



	F	D	GB	E	I	P
	Levage	Heben	Hoisting	Elevación	Sollevarmento	Elevação
	Distribution	Katzfahren	Trolleying	Distribución	Ditribuzione	Distribuição
	Orientation	Schwenken	Stewing	Orientación	Rotazione	Rotação
	Translation	Kranfahren	Travelling	Traslación	Traslazione	Translação
	Conforme aux directives CEE sur le niveau acoustique	Gemäss EWG-Richtlinien für den Schall-Leistungspegel	In compliance with the EEC Instructions on noise level	Conforme con las directivas CEE sobre el nivel acustico	Conforme alle direttive CEE sul livello acustico	Conforme as directivas CEE sobre o nivel acústico

 Document commercial non contractuel. Pour toute information technique se référer à la notice correspondante

Unverbindliches Vertriebsdokument. Für technische Informationen, siehe die entsprechenden Anweisungen.

This commercial document is not legally binding. For any technical information, please refer to the corresponding instructions.

Documento commercial no contractual. Para cualquier información técnica, ver la noticia correspondiente.

Documento commerciale non vincolante, per tutte le informazioni tecniche fare riferimento al catalogo istruzioni

Documento comercial não contractual. Para qualquer informação técnica complementar consultar as respectivas instruções



18, rue de Charbonnières - B.P.173
69132 ECULLY Cedex - France

Tél. : (33) 4 72 18 20 20
Fax. : (33) 4 72 18 20 00
www.manitowoccrane.com www.potain.com



Americas
Tel: +1 920 683 6322
Tel: +1 717 597 8121

Europe - Middle East - Africa
Tel : +(33) 4 72 81 50 00
Tel : +(44) 191 565 6281

Asia - Pacific
Tel: +(65) 6861 7133
Fax: +(65) 6862 4142

www.manitowoccrane.com

TOPKIT MD 238 J12

Réf. 2003 48 LYP 2

Copyright.Reproduction interdite © POTAIN 2003

Réalisation Sedoc